

MULTI-GEL - Gel Forming Water-Reactive Polyurethane Resin

DESCRIPTION

MULTI-GEL is a solvent-free, non-toxic, single-component water-reactive polyurethane injection resin. It reacts with water to form a flexible hydrophilic barrier. Depending on the amount of water in the mixture, when cured, **MULTI-GEL** will vary in consistency from strong elastic rubber-like foams, to stable gels containing as much as 800% water. After curing, **MULTI-GEL** will absorb limited amounts of water and will shrink slowly if allowed to dry.

COMPOSITION

RESIN – polyurethane prepolymer (MDI-based)
 ACCELERATOR – alkylamine accelerator (optional)

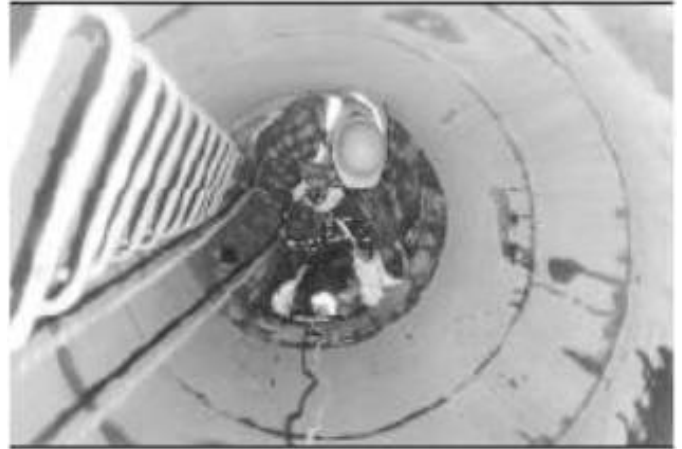
APPLICATION

MULTI-GEL was developed to seal active cracks and joints in underground sewers and manholes, even when large seepages or flowing leaks are encountered.

In the range of 1:1 to 2:1 water:resin ratios, hydrophilic foams with decreasing strength are obtained in less than one minute. In the range of 2:1 to 8:1 water:resin ratios, hydrophilic gels are obtained in less than one minute.

CHARACTERISTICS

Component:	<u>RESIN</u>
Density (20°C):	1.05
Viscosity (25°C):	1100 cps
Colour:	amber clear



*Leaking joints in precast concrete manholes are repaired using **MULTI-GEL** resin, a fast-curing, hydrophilic polyurethane developed specifically for this application*

PRODUCT MIXING & APPLICATION

1. Install using a fixed ratio or variable ratio two component injection pump to produce a controlled gel based on suitable water:resin ratios, taking into account site conditions.

PACKAGING

RESIN – 20 kg pails